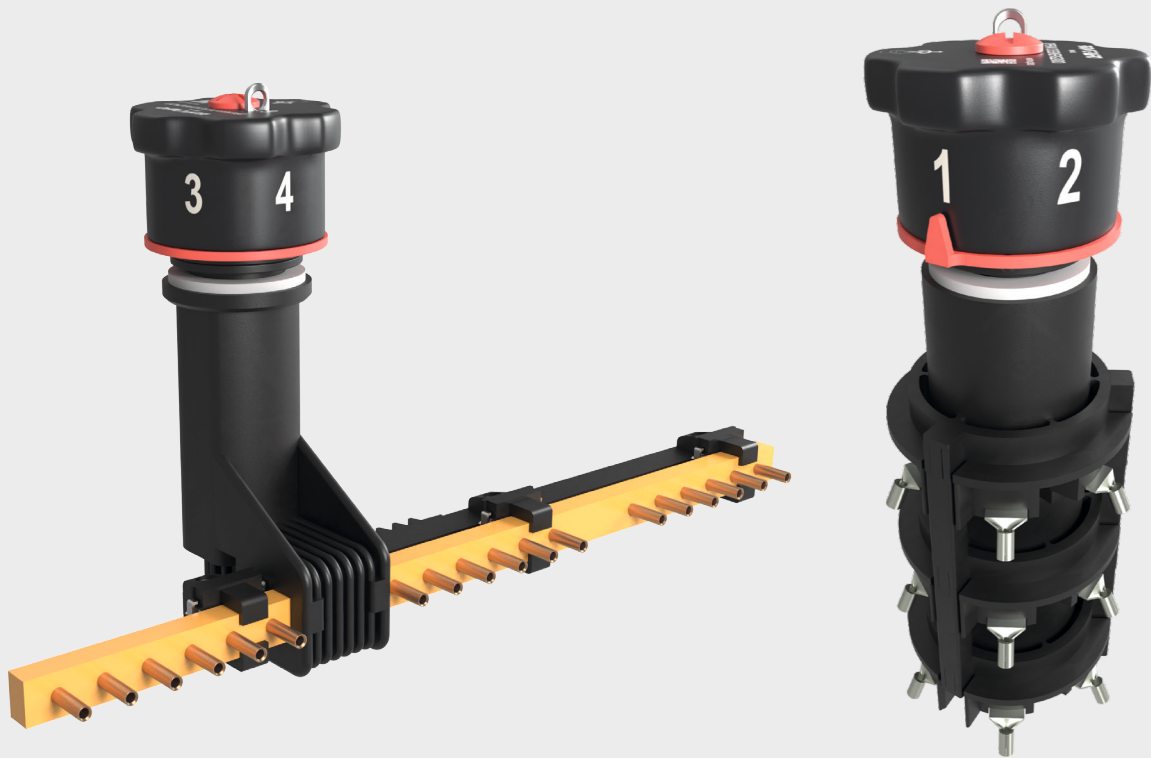


# De-energized Tap Changers

Distribution transformer solutions



**SUKRUT**<sup>®</sup>

Global technology for local needs

**RIO** ⚡ **TRAFO**<sup>®</sup>

[www.sukrutelectric.com](http://www.sukrutelectric.com)



## COMPACT DESIGN, RELIABLE & EASY TO INSTALL



Our de-energized tap changer is perfect choice for pole and pad mounted single and three-phase distribution transformers where dimensions and reliability are crucial. The rotary tap changer is ideal for sidewall tank mounting and is easy to install and to connect. Only high quality raw materials are used and production is guaranteed by a high level of standardization and quality control. Robustness is certified by IEC and IEEE type tests.



### Your advantages and technical features

- External operation with aluminum handle
- Different configurations available
- High quality certified materials
- Suitable for different insulation liquids and temperatures
- All gaskets in VITON® and double o-ring gasket system
- Contacts in copper 99.9% grade with silver plating
- Easy to install and adaptable for different transformer wall thicknesses
- Short delivery time

### Your advantages at a glance



#### Reliable

- Type tests according to IEC and IEEE
- Certified materials with quality insurance for each tap changer



#### Long service life

- Robust and weather-resistant cast aluminum handle
- Coating in accordance with ASTM B 117/2016 - ISO 9227/2012 standards
- Maintenance-free



# TECHNICAL INFORMATION

## ROTARY TAP CHANGER

<b>APPLICATION</b>	For distribution transformer filled with insulating liquid
<b>CONNECTION</b>	Delta / Star / Series-parallel
<b>HANDLE</b>	External
<b>POSITIONS / TAPS</b>	2-3-4-5-6-7
<b>PHASES</b>	1-2-3
<b>AMPERES (A)</b>	40 - 60
<b>VOLTAGE CLASS (kV)</b>	15 - 25 - 36
<b>BIL (kV)</b>	170 - 200
<b>STANDARDS</b>	IEC 60 214 / IEEE Std. C57. 131 / NBR 5440



## LINEAR TAP CHANGER

<b>APPLICATION</b>	For distribution transformer filled with insulating liquid
<b>CONNECTION</b>	Delta / Star / Series-parallel
<b>HANDLE</b>	External
<b>POSITIONS / TAPS</b>	2-3-4-5-6-7
<b>PHASES</b>	1-2-3
<b>AMPERES (A)</b>	30 - 40 - 75 - 150
<b>VOLTAGE CLASS (kV)</b>	15 - 25 - 36
<b>BIL (kV)</b>	150 - 200
<b>STANDARDS</b>	IEC 60 214 / NBR 5440



### Possible uses

- Can be used in different insulation liquids and ambient temperatures
- One-stop shopping



### Quick and easy assembly

- Adaptable for different tank wall thicknesses
- Crimped connection leads from transformer windings
- Simple operation (push and turn handle)



# RIO TRAFFO®



Global technology for local needs

## SUKRUT ELECTRIC CO. PVT. LTD.

Plot No. Pap-B-63, MIDC Chakan Industrial Area Phase - II, Village Bhamboli,  
Taluka Khed District Pune 410 501, Maharashtra, India.

Mobile : +91 75077 78841 / 75077 78842

Email : [marketing@sukrutelectric.com](mailto:marketing@sukrutelectric.com)

Web : [www.sukrutelectric.com](http://www.sukrutelectric.com)



We continuously review specifications and where appropriate, introduce modifications. We, therefore reserve the right to change specifications in this catalogue without prior notice.

SE/CATLG-OTDC

